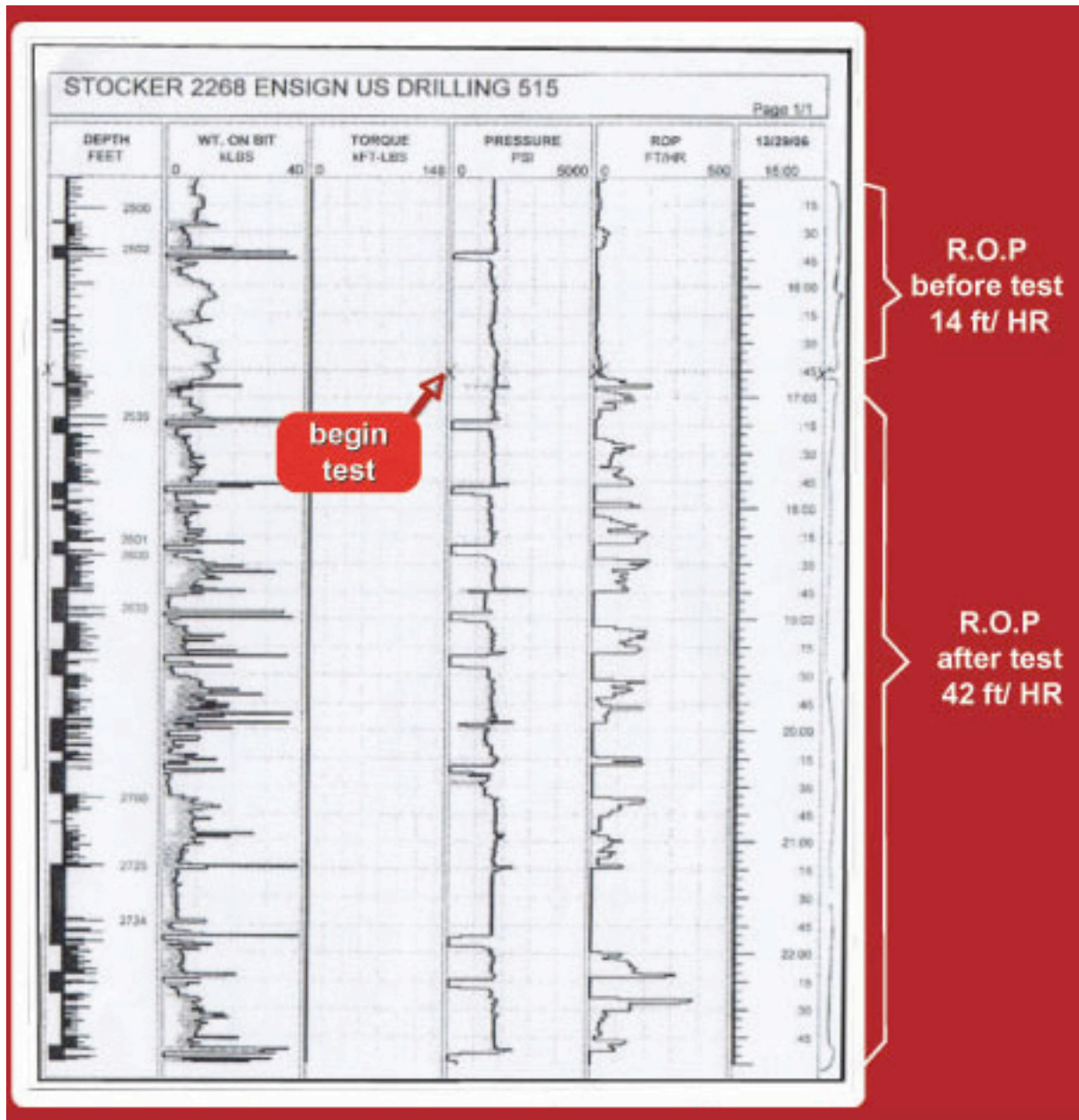


The following are examples of field tests conducted on the BallBuster BB-2 product:

CALIFORNIA - Stocker Field, Los Angeles



Severe bit balling which reduced the drilling rate to 14 ft/hr was observed for at least eight hours prior to the addition of BallBuster BB-2. Immediately after the addition of BB-2, the drilling rate increased to an average of 42 ft/hr.

SOUTH TEXAS

WELL COMPARISON		
	without BB-2	with BB-2
	WELL #8 / RIG #10	WELL #4/ RIG #10
START DATE	jun 11, 2009	mar 27, 2010
END DATE	jun 21, 2009	apr 2, 2010
ROCK BIT IN	0	0
ROCK BIT OUT	3919	4212
ROCK BIT RUN	3919	4212
ROCK BIT HOURS	84	38.5
ROCK BIT FT/HRS	81.23	109.40
% CHANGE	-	78.87
PDC BIT IN	3919	4212
PDC BIT OUT	7900	7880
PDCBIT RUN	3981	3468
PDC BIT HRS	82	49.5
PDC BIT FT/HRS	48.55	70.08
% CHANGE	-	44.31
TOTAL DRILLING HRS	146	88

Well #4 was drilled from start to finish using one stick of BB-2 per connection. The data obtained from this well were compared with Well #8, which was drilled one year earlier with the same rig. Rate of penetration was increased by 78%. Perhaps more importantly, the total drilling hours were reduced by almost half.